

K-Pack® II

Single packed hard case Terumo needle

Hypodermic needle dedicated
to the pharmaceutical industry



Needle designed for pharma industry

Single packed needle

The K-Pack II needle has been designed to allow for both manually and fully automated insertion of the needles into a secondary packaging together with the medication to be injected (delivered in pre-filled syringes, vial, ampoule). Therefore, each needle is individually packed in an ergonomically shaped hard cap and case.

Colour-coded label

The colour-coded sealing label provides instant identification of the needle gauge, facilitates inventory control and can be used for inline identification with vision systems. The product is closed with tamper proof label. K-Pack II is very easy to open by the user.

Economic

K-Pack II has been designed to occupy minimal space in your packaging. The product configuration is suited for automated handling. Its ergonomic shape allows correct product orientation and its flange provides support of the product on feeding systems. K-Pack II's round shape facilitates pick-and-place by suction pads. The product has a clear and simple labelling.

Terumo-Thin Wall for increased flow rates

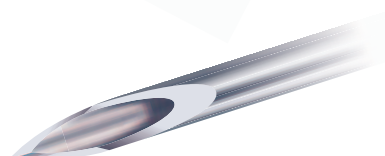
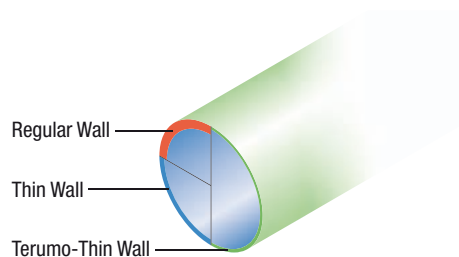
The Terumo-Thin Wall needles allow you to choose a smaller, more comfortable gauge size with increased flow rates over Regular and Thin Walled needles. Additionally, injection fluids with a high viscosity can be injected more smoothly than with standard needles.

Thin Wall in short case

These Thin Wall needles in short case configuration guarantee minimal space occupancy in your secondary packaging. They also ensure a smooth injection of more viscous materials and are currently available in 3 different sizes: 27G, 29G and 30G.

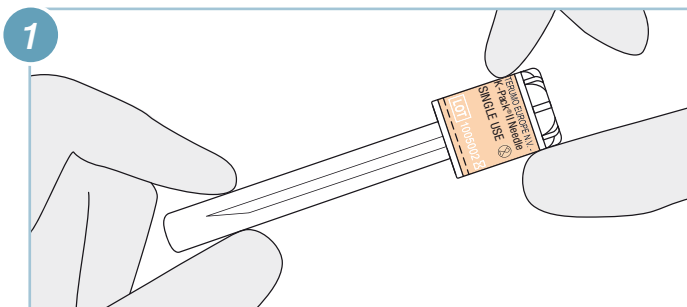
Minimal patient discomfort

The needle's ultra-sharp LANCET POINT decreases penetration resistance, which results in less pain and trauma for the patient.

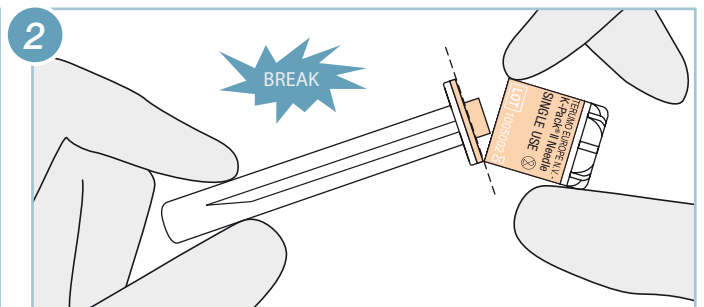


How to open K-Pack® II

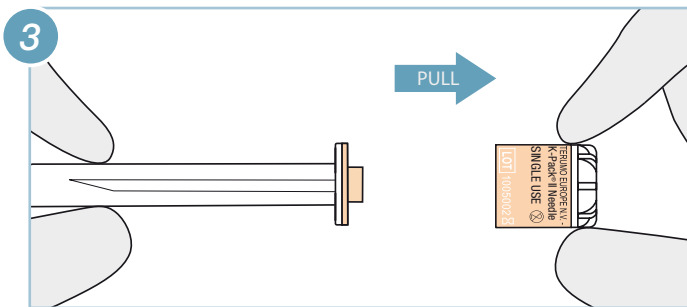
Opening Method 1



1 Grip needle firmly at both ends

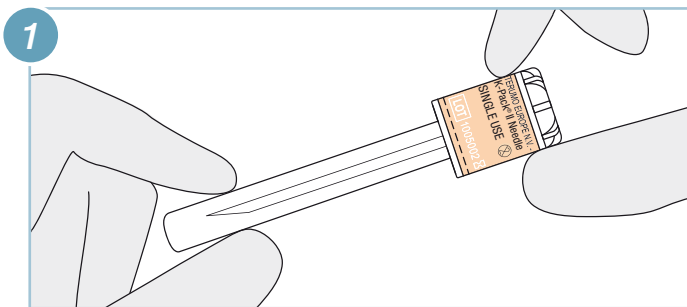


2 Make a slight breaking movement (at the perforation) on both ends

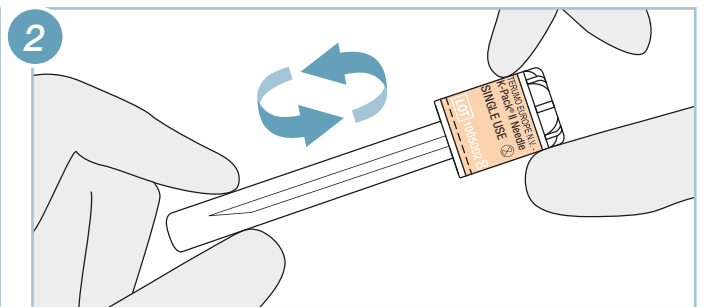


3 Pull the cap from the needle

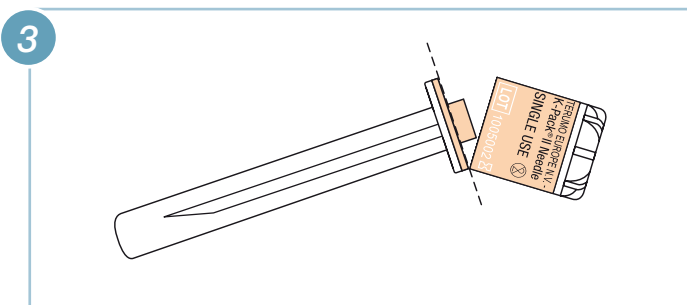
Opening Method 2



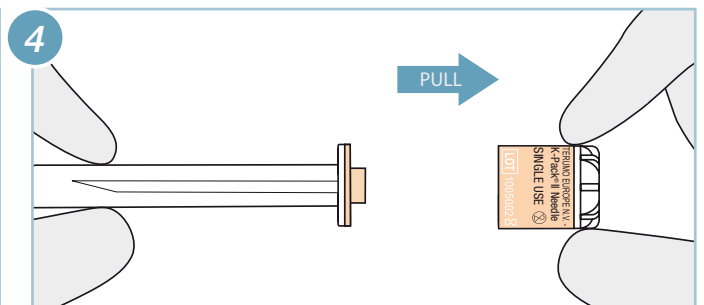
1 Grip needle firmly at both ends



2 Turn or twist the cap (clockwise or counter clockwise)



3 The label will break at the perforation lines



4 Pull the cap from the needle

General Specifications

Specification	Description
Needle point	Lancet point (3-bevel)
Cannulae	Stainless steel X5CrNi 18-10
Hub	Polypropylene
Individual packaging	Hard cap and case with tamper-evident label
Shipping carton	Bulk 5000 pcs
Method of sterilization	Ethylene Oxide
EN ISO 7864	Sterile hypodermic needles for single use
Shelf life	5 years



The device has no components made of natural rubber latex.

K-Pack Surshield™

Next generation of sharps protection technology



Ordering Information

Product code	Colour code	Diameter		Needle length mm	Wall thickness
		Gauge	mm		
KN-1838SB	Pink	18G	1.2	40 mm (1 1/2")	Thin Wall
KN-1938RB	Ivory	19G	1.1	40 mm (1 1/2")	Thin Wall
KN-2138RB	Green	21G	0.8	40 mm (1 1/2")	Terumo - Thin Wall
KN-2232RB	Black	22G	0.7	30 mm (1 1/4")	Terumo - Thin Wall
KN-2238RB	Black	22G	0.7	40 mm (1 1/2")	Terumo - Thin Wall
KN-2325RB	Blue	23G	0.6	25 mm (1")	Terumo - Thin Wall
KN-2332RB	Blue	23G	0.6	30 mm (1 1/4")	Terumo - Thin Wall
KN-2516RB05	Salmon	25G	0.5	16 mm (5/8")	Terumo - Thin Wall
KN-2525RB	Orange	25G	0.5	25 mm (1")	Terumo - Thin Wall
KN-2610RB	Brown	26G	0.45	10 mm (3/8")	Regular Wall
KN-2616RB	Brown	26G	0.45	16 mm (5/8")	Regular Wall
KN-2713RB	Grey	27G	0.4	12 mm (1/2")	Regular Wall
KN-2713RBKT	Grey	27G	0.4	12 mm (1/2")	Thin Wall - Short Case
KN-2913RB	Red	29G	0.33	12 mm (1/2")	Regular Wall
KN-2913RBKT	Red	29G	0.33	12 mm (1/2")	Thin Wall - Short Case
KN-3013RB	Yellow	30G	0.3	12 mm (1/2")	Regular Wall
KN-3013RBKT	Yellow	30G	0.3	12 mm (1/2")	Thin Wall - Short Case

For other needle sizes, please contact us.



Global Pharmaceutical Solutions

Terumo Europe N.V.
 Researchpark Haasrode 1520
 Interleuvenlaan 40
 3001 Leuven, Belgium
 Phone: +32 16 38 15 00
 Fax: +32 16 38 16 04
<http://www.terumo-europe.com/pharmaceutical/>

Terumo Medical Corporation
 2101 Cottontail Lane
 Somerset
 New Jersey 08873
 United States
 Phone: +1 732 302 4900
 Fax: +1 732 302 3083
www.terumomedical.com

Terumo Corporation
 44-1, 2-chome, Hatagaya
 Shibuya-ku
 Tokyo 151-0072,
 Japan
 Phone: +81 3 3374 8111
 Fax: +81 3 3374 8196
www.terumo.com

Terumo Corporation Dubai Branch
 22nd Floor, Al Masraf Tower
 Beniyas Street, Deira
 Dubai, United Arab Emirates
 Phone: +971 4 2212 220
 Fax: +971 4 2213 330

**Addresses subject to change,
 please consult our Website.**

Email: gps.info@terumo-europe.com

© Registered Trademark
 Published by Terumo Europe N.V.
 GPS19GB-0212FK-11(02.12)E